

Intuisus i1

Quick Start Guide

Thank You for Choosing



SYNERGIA

Read all instructions carefully
before you begin.

This Package Contains:



Compact Flash Card



Intuisus i1



Installation Manual & CD



Power Cord



Power Adapter

Copyright 2014 Synergia Communications.
All rights reserved.



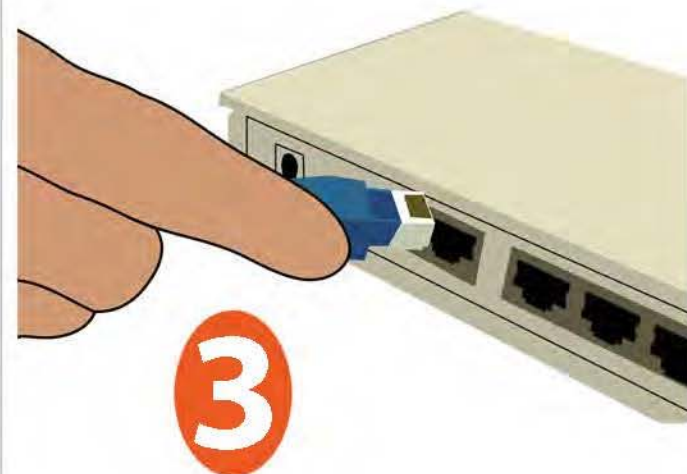
1

Remove Compact Flash port cover with a small screwdriver.



2

Insert Compact Flash.



3

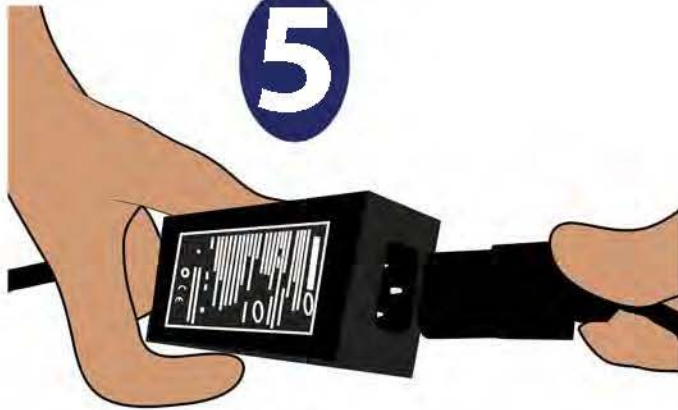
Plug ethernet cable into WAN port of the i1.



4

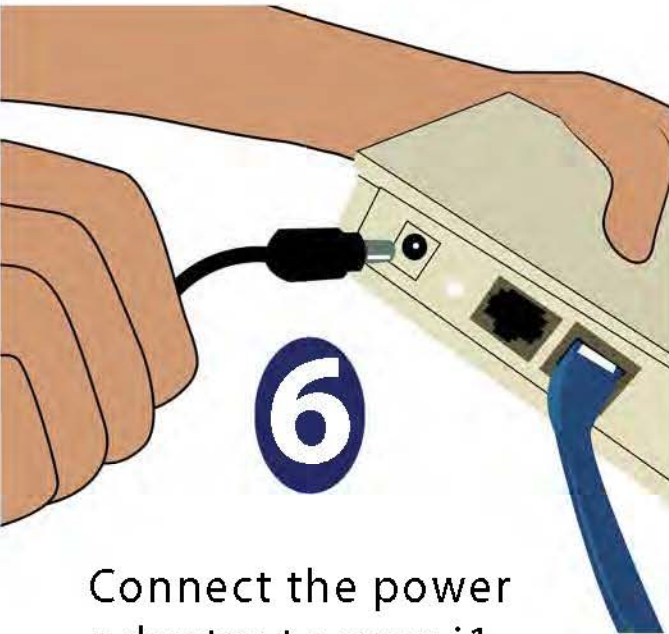
Plug other end of ethernet cable into a switch

5



Connect the power cord to the i1 power adapter, then plug it into an outlet.

6



Connect the power adapter to your i1.



Your i1 Telephone System will boot for about 2 minutes



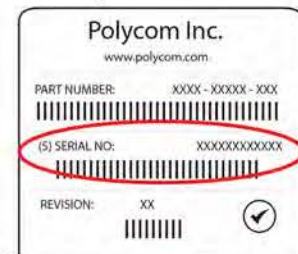
Once booted, blue PWR light will be steady and green WAN port light will flash.

Assemble the telephones per the manufacturers instructions

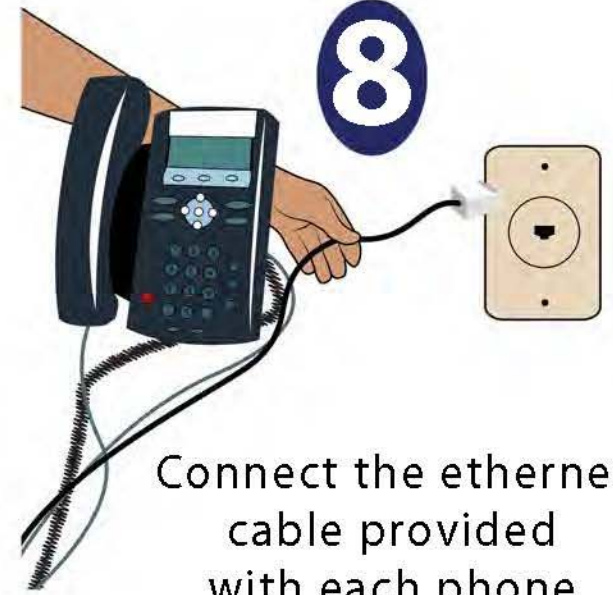
7

Telephone Location	Extension	Telephone Serial No:	Telephone Make/Model
Fred Smith	100	0004F2CC6CD2	Polycom IP 331
Bernie Mack	101	0004F2CE6C04	Polycom IP 335
Frida Kaulo	102	0004F2DE6B85	Polycom IP 450

Use the Telephone List provided, (usually via email) for the locations of each phone.



8



Connect the ethernet cable provided with each phone to an ethernet jack.

9



Plug the phone's power adapter into an outlet.